



119' (36.2m)



154' (46.9m)



119' (36.2m)

# TITAN® Low Slope Building Series

85' to 165' wide (25.9m to 50.2m)

## Building Features

The Cover-All® TITAN® Low Slope building offers tremendous strength and durability in a massive clear-span space, and is designed to meet the needs of large operations. Engineered for use world-wide and rated for wind and snow loads, TITAN® Low Slope buildings maintain structural integrity even under unbalanced conditions. The TITAN® Low Slope is especially engineered for use in high wind load regions. Extensive ongoing tests of the engineering and individual components ensure that each structural part is complimentary in weight and strength and, in combination, create a sound, secure steel framework. TITAN® Low Slope buildings can be fully constructed in just weeks.

## Models and Sizes Available

Cover-All® TITAN® Low Slope buildings are available in widths from 85 to 165 feet (25.9m to 50.2m), and can be manufactured to any length. The modular design allows you to extend the building at any time to meet your changing needs. Engineer-sealed drawings are available for all TITAN® Low Slope models ensuring building integrity is certified and satisfying local codes and permit requirements. Individual custom drawings are also available.

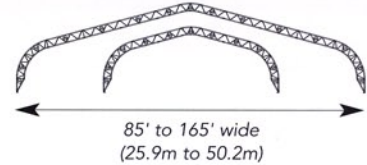
**TBS Series 4 Low Slope - Widths: 85', 96', 107', 119', 131', 142', 154', 165'.**  
**(25.9m, 29.2m, 32.6m, 36.2m, 39.9m, 43.2m, 46.9m, 50.2m)**

Constructed of welded truss arches with parallel 5" (12.7cm) diameter steel tubes spaced 42" (106.6cm) apart and strengthened by 2 3/8" (6.0cm) diameter structural webbing.

Main structural support trusses are continuous from the ground seal to the peak and manufactured so no eave exists (eaves available upon request). There are no exterior purlins and the structure is completely clear-span with no interior supports.

## Building Profile

For detailed specifications including outside width, inside width, and bay spacing, contact your local Authorized Cover-All Dealer.



## Building Materials

### DuraWeave® Covers

Cover-All's high performance DuraWeave® covers are virtually maintenance free. The patented double stack weave provides unmatched strength to weight ratios. The patented WinchLoc™ system provides unparalleled cover-fastening strength. With a series of 10,000 lb. winches and zero-stretch belting, covers stay tight and secure. DuraWeave® and DuraWeave® FR covers are backed by 15 and 10 year pro rata warranties respectively. PVC fabric is available on request.

### ViperSteel® Framework

Our framework is constructed with ViperSteel® and clad with triple-coated Gatorshield® corrosion barrier. Independent salt spray tests show that Gatorshield® provides a service life three times longer than conventional galvanized steel. All welds are sandblasted and finished with a state-of-the-art molten zinc anti-corrosion process unique to Cover-All®.

## Foundation Options

Foundation options are varied and may include, but are not limited to: spread footings, concrete piles, floating blocks, concrete or steel walls, and ground anchors. Specific foundation applications are dependent on site conditions. Cover-All® TITAN® Low Slope buildings can be installed for both wall and ground mount applications.

## Dealer Network

Your local authorized Cover-All Dealer is part of a world-wide product support network that will provide you with service and support for all your building needs - before, during and after your building installation.

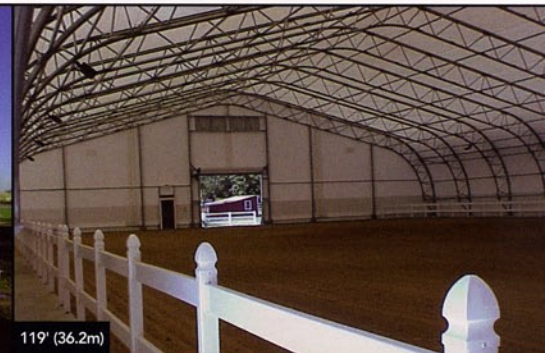
Prod#720080 /1377-05 COVER-ALL, TITAN, VIPERSTEEL, DURAWEAWE AND WINCHLOC ARE TRADEMARKS OR REGISTERED TRADEMARKS OF COVER-ALL BUILDING SYSTEMS INC/STEEL TUBING SUPPLIED BY ALLIED/SPECIFICATIONS AND INFORMATION ARE SUBJECT TO CHANGE WITHOUT NOTICE



154' (46.9m)



142' (43.2m)



119' (36.2m)

